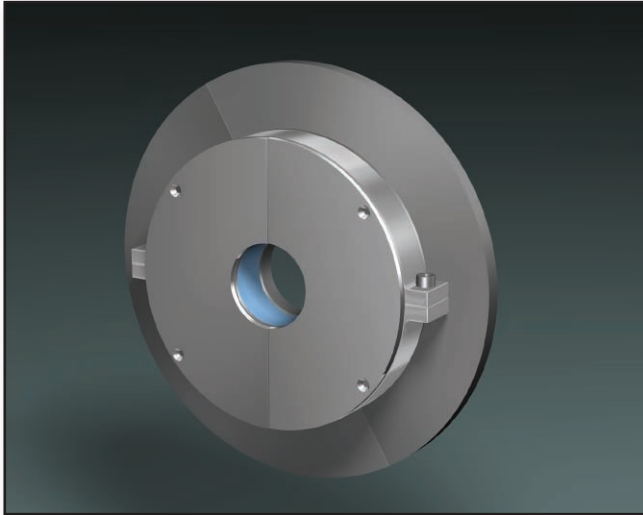




THE NEW STAINLESS STEEL CINCHSEAL IS AVAILABLE!!!

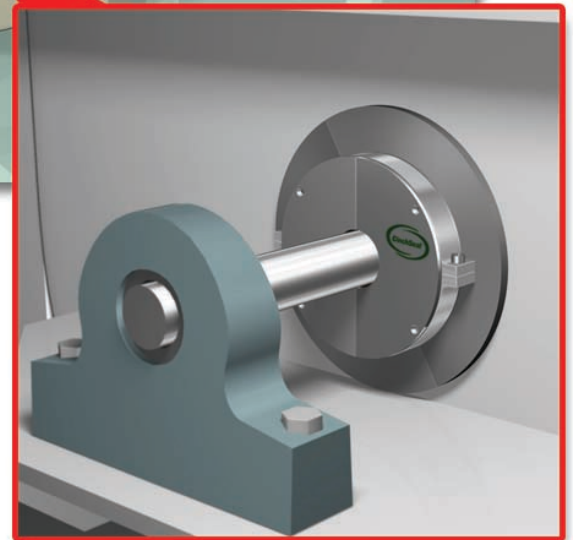
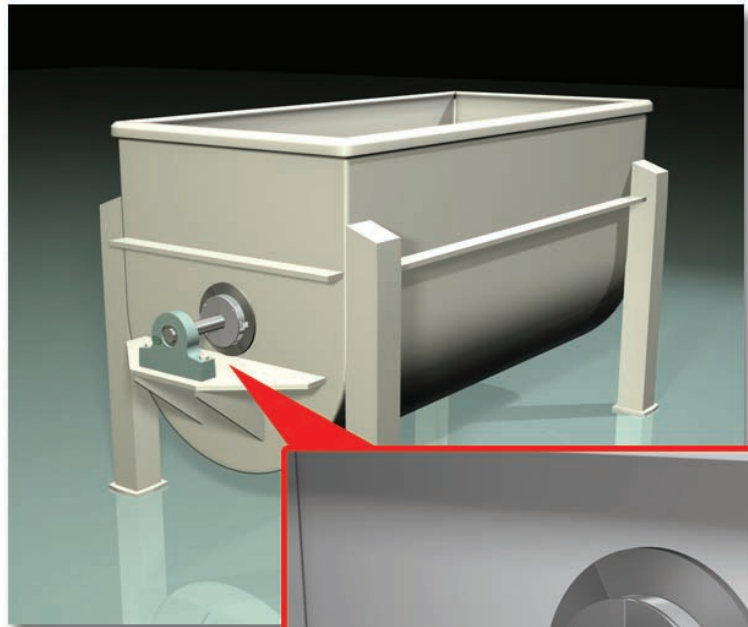
9000 Series CinchSeal

Entirely split to make installation
a Cinch...

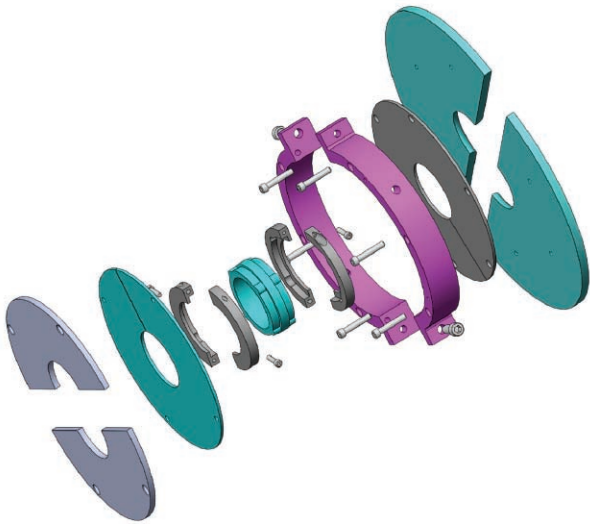


The newly designed 9000 series **CinchSeal®** for mixing, blending and processing equipment is manufactured entirely out of 316 SS to handle dry powder and slurry products in the food service, pharmaceutical and chemical industries where stainless steel is required.

- Eliminates product leakage, house keeping issues, bearing and drive failure
- Installation requires no equipment removal
- Manufactured out of 316 stainless steel
- Eliminates product contamination caused by the breaking down of braided packing
- Seals hazardous vapors and dust
- Consumes less power than braided packing
- Will not damage or undercut shaft



Exploded view of CinchSeal 9000 Series



How the 9000 Series Works

The heart of the seal is the blue elastomer boot that is molded slightly smaller than the shaft size to create an interference fit that drives the rotor cups while also stopping material from migrating down the shaft and leaking out. As the elastomer turns with the shaft it drives the stainless steel rotor cups against the stationary and wearable plates, which forms the primary seal. The 9000 model has a hose clamp design that must be tightened a ¼ turn every 6 months. The purpose of tightening the hose clamp is to make up for the lost compression due to the difference in space as the rotor cups wear into the stator plate. The seal is purged with air 7 to 10 PSI over vessel pressure to keep the rotating parts cool and free of material. The 9000 series is easy for maintenance personnel to take apart, clean, and re-assemble. This seal will give customers thousands of hours of leak free service before a repair kit is necessary.

APPLICATIONS

The CinchSeal 9000 series is proven effective in sealing ribbon blenders and paddle mixers used in processing dry powder, semi-solid and slurry applications. Among the particularly challenging materials we have been successful in sealing are: cement, spices, cocoa powder, liquid chocolate, plastics and resins, salt, sugar, etc.

ACCESSORIES

- Seal Repair Kits
- Air Pressure Regulators
- Automatic Greaser
- Water Pressure Regulator

PURGE OPTIONS

All CinchSeals should be purged with either plant air, nitrogen, or silicone grease. For best results, each seal should have an air regulator and not share. Air purging the seal creates a higher pressure inside the seal cavity which creates an air barrier that helps keep material inside the tank and out of the seal which adds to the life of the wearable parts of the seal.

INSTALLATION

The CinchSeal 9000 series should not be installed on severely worn equipment. Damaged shafts or excessive float or misalignment should be corrected prior to installation. The seal must be mounted square to the shaft. Please refer to installation guide when mounting your seal. Call or visit our website if help is needed.

9000 DIMENSIONAL INFORMATION

